

ABOUT PRAHRAN MISSION

Established in 1946, Prahran Mission, an agency of the Uniting Church in Australia, provides emergency relief to those experiencing poverty, homelessness and economic disadvantage as well as rehabilitation services to those experiencing mental illness and psychiatric disability. We believe that everyone deserves a decent life.

OUR ARTISTIC COMMUNITIES

The Stables is located in Burke Road, Malvern East, it is a not-for-profit art studio, run by Prahran Mission. We provide a safe space for artists with experience of mental health issues in which to practice their art. The studio aims to provide a stimulating artistic community where aspiring artists have the freedom, facilities and resources to explore their creative endeavours at a low cost.

If you've been affected by mental illness and are interested in joining the Stables community or would like to find out about their exhibitions, contact David Davies or Alison Weaver 9695 9533 or 9692 9500

In the Day Rehabilitation Program at 211 Chapel Street creating art is seen as a beneficial tool for emotional exploration and expression. The Second Story Program provides one to one support and group activities to assist people to rebuild confidence and learn new skills and focus on recovery from challenging mental health experiences.

The artroom at Second Story is a safe place for people to participate in structured art groups where they can learn new skills, develop ideas and enjoy social interaction.

T: 03 9692 9500
E: admin@prahranmission.org.au
W: www.prahranmission.org.au

THANK YOU:

Each year this exhibition is made possible through the generous work and support of many artists, staff, donors and volunteers. We offer our sincere thanks to everyone who has helped to make this exciting event come to life and special thanks to Andrew Murray, Alistair Richards, Chris Deutscher and the City of Stonnington.

Special thanks to David Davies.

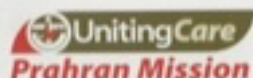
This Catalogue is an initiative by the Stables Artist Community coordinated by Güler Altunbas.
www.guleraltunbas.blogspot.com.au

Design by Gatsby
www.withgatsby.com

PROUDLY SUPPORTED BY:



City of
STONNINGTON



All images are the copyright of the artists.

*Please note there is no wheelchair access to the Level 2 Gallery.

PRAHRAN MISSION 29TH ANNUAL ART EXHIBITION

IN THE GARDEN OF MY MIND

10-28 October 2012



CHAPEL OFF CHAPEL GALLERY
12 LITTLE CHAPEL STREET, PRAHRAN
FREE ENTRY

Opening Night on 10 October 2012, (6 pm - 8pm)
Opening Hours 7 days/week 10am - 5pm

Special guest speaker Chris Deutscher
from Deutscher & Hackett

Image: Dawn Boylan, "Coming into Colour"

IN THE GARDEN OF MY MIND

PRAHRAN MISSION
29th Annual Art
Exhibition



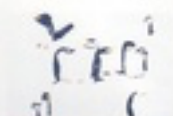
MATTHEW FARRELL-COUGH
Cat in A Fish Bowl



MALCOLM STEWART
Crimson Rosellas in the
Dandenongs



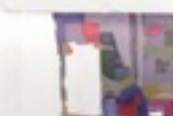
ROSALIE FITZSIMMONS
Abstract Shape & Colour No 2



ROGER KENNARD
Penguins of the Antarctic



FIONA LERK
Flowers



ANDRÉE VAN SCHAİK
Studio



SHARON BIGGS
Back to Terra Firma



ELLIOT KWAN
Summer Gum



ALEX HUXHAM
Trees



ELEANOR SCHULTZ
Flower duet with Birdsong



GÜLER ALTUNBAS
Protection



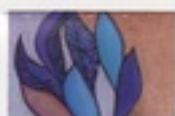
CLARE FITZGERALD
Untitled



ROBERT ROSMARIN
Mystify



SUZANNE DONATO
Untitled



KATRINA CROSSBY
Leave me alone



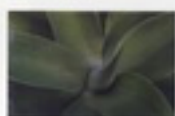
MARY DU
Untitled



IVAN FERNANDO
Destiny of Srya



ADAM JEFFERY
Sport



RAY SALAO
Green Weaver



QUENTIN DOCHERTY
Love Blue

10-28 OCTOBER 2012
Opening night
10 October 2012 (6pm-8pm)

CHAPEL OFF
CHAPEL GALLERY
12 Little Chapel Street,
Prahran

SPECIAL
GUEST SPEAKER
Chris Deutscher from
Deutscher & Hackett



DANIELLA PAVLOVIC
You gotta be crazy to
believe in yourself



JI-WON HWANG
Curious space view
from Space



TANIA JOYCE
My Lifestyle Fishes
under the sea



JOSHUA PATRICK BROWN
Drawing Bread



MIKALA KNIGHT
Rose



FIONA WALSHÉ
Child with Doll



NADA THOMPSON
The Flower Fairy



MORGAN DUFFY
Sequined Umbrella



DAWN BOYLAN
Coming into Colour



PETER LEONARD
Annie



SOPHIE WILLIAMS
Little Boy



DEB BOWERS
Ginger Tom



AMANDA SAMMUT
Pin Board



CHRISTIE BROWN
Finding Nemo



GILA KOZMA
Cezanne



IAN HARRIS
The Tower of London



TERRI FEALY
Kilm Dove



SUZANNE MILLER
Hatching



IAN JONES
Untitled



LEANNE SMITH
Frame

CHAPEL OFF CHAPEL GALLERY

12 LITTLE CHAPEL STREET, PRAHRAN

Opening Night on 10 October 2012, 05 pm – 8pm

Welcome to Prahran Mission's 29th Annual Art Exhibition. Prahran Mission is proud to present the works of over 60 artists who have recognised the valuable role art holds in their recovery journey.

Every year I marvel at the depth of artistic talent we have at the Mission: amazing mosaics and life drawings, exquisite water colours and acrylics, extraordinary ceramics and photographs. This year's exhibition promises to be another inundation of colour, form and expression to stimulate your senses.

The Day Rehabilitation programs celebrate people's creativity, provide many opportunities for creative expression, as you will bear witness to at this event. A big thank you to the art team, Alison Weaver, David Davies and Bobbie Pritchard for their hard work, encouragement and the extra support they give the artists that have their work in this exhibition.

Kim Waugh

Manager Day Rehabilitation Programs.

Please join us to celebrate and enjoy the wonder of creativity; the great achievement of recovery; and the courage and dignity of the participants of our programs. This year our opening night speaker is Chris Deutscher from Australia's leading Art Auction House Deutscher & Hackett.

Alison Weaver

Stables Co-ordinator

MEET THE ARTISTS

Meet the Artists' during the Exhibition on Tuesday 10th October 12 pm – 2 pm. We're offering a unique opportunity to meet some of the artists whose artworks are exhibited. Come along to Chapel Off Chapel Gallery and hear the stories behind the art.

I enjoy painting at and attending The Stables because it allows and encourages me to be creative in a sympathetic and safe atmosphere. I like the atmosphere because we can swap ideas and have discussions amongst people who understand each other and are non-judgemental. It encourages my creativity with a view to exhibiting my art and possible sales. It also provides opportunities to experiment and explore new directions (mosaics, china painting, life-drawing and others). It also gives me the incentive to make the effort and persevere with my painting and art work.

Dawn Boylan

Stables Artist

Congratulations and thank you to Dawn Boylan. Dawn's painting "Coming into Colour" won our poster competition this year.

"In The Garden Of My Mind" evokes a place where with nurture, light and creativity a beautiful, positive and restful retreat can be created within. To maintain a healthy mind one must be vigilant to keep negative and destructive elements at bay, such as thorns and weeds; then the mind can blossom and grow, embracing beauty and light.

Katrina Crosby

Stables Artist

Congratulations and thank you to Katrina Crosby. Katrina came up with this year's winning title for the exhibition.

A WORD FROM THE ARTIST'S

A place to splash the brush

- Fiona

A great place to express myself

- Adam

What I like most about Stables is the hints I get from Alison or any instructors

- Roger

A good reason to get out of my unit

- Christie

The Stables is a place I can touch base with my art mates and net buddies, and try out my artistic ideas

- Stezzo

The Stables offers me a friendly and encouraging space in which to explore my love of painting

- Mikala



Image: "Green Weaver" By Ray Salao

Congratulations and thank you to Ray Salao. Ray's photograph won second prize in our poster competition this year.